

## AXIS Pendant Kits for fixed domes

Expand the mounting options for Axis fixed dome network cameras.



- > Expands mounting options
- > Standard dimensions
- > Easy installation
- > Internal cabling
- > Stylish design

AXIS Pendant Kits are designed to expand the options for mounting Axis fixed dome network cameras. Different solutions enable wall, ceiling or parapet mount to ensure a clear field of view.

All brackets have internal cable channels, which protect the cables from intentional and unintentional damage.

Accessories are available to enable both corner and pole mounting. The tubes for hard ceiling mounting are especially useful for avoiding objects blocking the view.

Supported cameras are: AXIS 216FD, AXIS 216MFD, AXIS216FD-V,AXIS216MFD-V,AXISP3301,AXISP3301-V and AXIS 225FD Network Cameras.

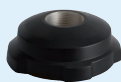
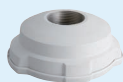


## Technical specifications – AXIS Pendant Kits for fixed domes

### AXIS Pendant Kits

Compatible with  
AXIS 216FD, AXIS 216MFD, AXIS 216FD-V,  
AXIS 216MFD-V, AXIS P3301, AXIS P3301-V

1.5" NPT to  
M30 adapter



### AXIS Pendant Kits

Compatible with  
AXIS 225FD

1.5" NPT to  
M30 adapter



### Mounts using standard 1.5" NPT connection

Gooseneck  
Wall mount



Parapet mount



Pole mount



Corner mount



### Mounts using M30 connection

Wall mount



Parapet  
mount



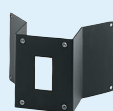
Pendant  
mount



Pole mount



Corner mount



More information and a configuration tool is available at  
[www.axis.com/accessories](http://www.axis.com/accessories)